

**Give your truck style & functionality  
with Rage, Dimension & Hugger Limited  
Tonneau Covers.**



**TRASON**

Rage, Dimension & Hugger Tonneau Lids

# Get with the newest—

# Rage!



## Why it's the Rage:

- Style defined by each truck's design
- Clamp and go rail-mounting hardware (no need to drill holes)
- Easy front to back and side to side adjustment
- Simply remove 4 nuts and two cantilever arm lock pins to remove and reinstall with reverse procedure

# From Concept to Reality

**Consider the possibilities... We did!**

Engaging the truck's theme, the Jason design team used it as the epicenter for the Rage. The result is a Rage tonneau cover, as unique as the pickup truck it is intended for. With the Rage, the ordinary becomes extraordinary!



- Optional electronic lid lift assist
- Limited lifetime warranties on paint and fiberglass structure
- 3 year warranty on hardware and gas shocks



**The One You're Looking For**



Jason ION® oval lock standard on Rage and Hugger



Rage and Hugger front hinge system

## How we build them

 The Concept Rendering	 The Pattern begins as a mound of foam	 Final calibrations before the CNC machine begins
 5 axis CNC machining	 Close look at CNC mill routing the foam patterns	 Right side of master pattern is complete
 Right and left pattern sections are joined	 Test fitting of pattern on truck	 Forming plug is made from foam pattern
 Craftsmen fine tuning master plug	 Mold is readied for production	 Mold coated with primer gel coat & laminated with fiberglass
 Hardware components installed & edges trimmed	 Each lid is hand sanded & prepared for painting	 DuPont® finish features multiple coats of base and clear coat paint
 Inspectors under a bank of high intensity lights perform quality checks	 Final Inspection and a complete wash prior to loading	 Lids ready for shipping
 <b>The Reality!</b>		

# Hugger

Designed to enhance the automotive looks of your truck

## LIMITED

- Wrap-over contour design with incisive simplicity, intriguing eloquence and seamless anticipation
- Automotive style lock mechanism and slam latch system with cantilever arms for ease of open and close operation
- Clamp-on mounting hardware
- Cargo protection, security & latch
- Pull-down assist closure strap
- Monochromatic edge
- Limited lifetime paint and structure warranties
- 7-layer construction with honeycomb roof support, rolled smooth interior, exterior high performance DuPont® chroma premier basecoat automotive finish



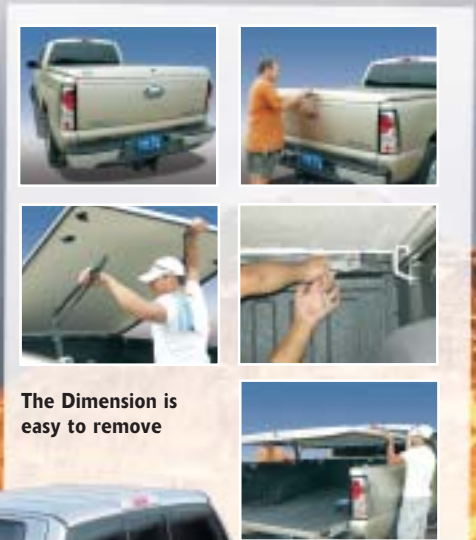
Slam Latch System with cantilever arms and pull-down closure strap



# Dimension

Right from every angle... great styling... great price!!

- Stylish design enhances automotive appearance
- Light weight – easy to handle
- Cargo protection, security and utility
- Jason's standard twist lock system
- Clamp-and-go frame mounting
- Pull-down assist closure strap
- Limited lifetime paint and structure warranties
- 3-year warranty on hardware & gas shocks
- 7-layer construction with tricell roof support, rolled smooth interior, exterior high performance BASF *Diamond Paint System* base-coat / clear-coat automotive finish



The Dimension is easy to remove



Standard: Twist Lock System® with slam latch and cantilever assist arms ensures easy operation.

## Standards and Options

	RAGE	HUGGER LIMITED	DIMENSION
Automotive Base Coat / Clear Coat Paint Finish	S	S	S
Limited Life-Time Structure Warranty	S	S	S
Limited Life-Time Paint Warranty	S	S	S
3-Year Limited Warranty on Hardware Components	S	S	S
Painted Trim Edge	S	S	S
Air Glide Click Latch System	S	S	S
Articulating Front Hinge System	S	S	
Gas Prop Lift System, Featuring Lid Assist Arms	S	S	O
High Pressure Gas Strut Lift System			S
Steel Frame w/ a Clamp & Go Mounting System	S	S	S
Carpet Interior	O	O	O
Interior Light - Battery	O	O	O
Roof Rack System	O	O	O
Honey Comb Roof, Double Laminated Support System	S	S	
Tricell Support - Laminated Interior			S
Twist lock by Jason			S
Jason Oval ION lock	S	S	
Electronic Lid Lift - Assist	O	O	O
Uniquely Styled to Each Truck	S		
Wrap Over Side Rail Design	S*	S	
Wrap Over Tail gate Protection	S	S	S

S = Standard O = Optional \*Some Models



Lock release system



Black Carpet Interior



Silver Carpet Interior



Tan Carpet Interior



Dimension front hinge system



Optional lid lift system with carpeted interior and key FOB



Optional bike rack



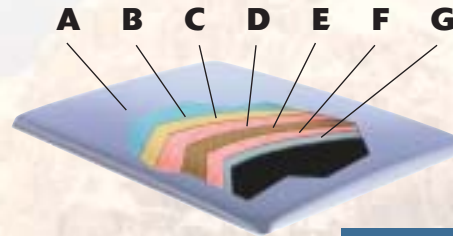
Lid opens and closes with ease using our new energy assist arms.



Optional stand alone battery powered interior light and carpeted interior



Our delivery trucks loaded & heading your way!



- A** BASF *Diamond Paint System* base-coat
- B** BASF *Diamond Paint System* clear-coat finish
- C** High performance primer gel-coat
- D** Structural strength primary fiberglass layer
- E** 1/2" honeycomb roof support
- F** Double layered bonded fiberglass reinforcement
- G** Rolled smooth interior finish



## 30 years of Spirit and Passion show in Jason's...

- **Work.** Jason lids are recognized and respected for innovation and quality. Thousands of satisfied customers prove it.
- **People.** When we choose the people who build and sell our products, we're selective. That's how we continually assure quality products and excellent follow-up service from a broad base of authorized Jason retailers.
- **Attitudes.** We use our own products every day. When we're satisfied that what we have works best, we know our customers will be satisfied, too.
- **Commitment.** We're dedicated to consistent improvement, dependable quality, and continuing innovation. This powerful combination of goals is the key to Jason's customer satisfaction.

*There's Only One Choice - Jason*

# JASON

Truck Caps & Accessories

Jason Industries Inc. • 1500 W. Lusher,  
Elkhart, IN 46517 • (800) 745-2766  
[www.jasoncaps.com](http://www.jasoncaps.com)